



# MONTHLY MEMBERSHIP PROGRESS REPORT

District 5M 8

Results as of: 06/30/2018

GMT: MICHAEL MOLENDIA

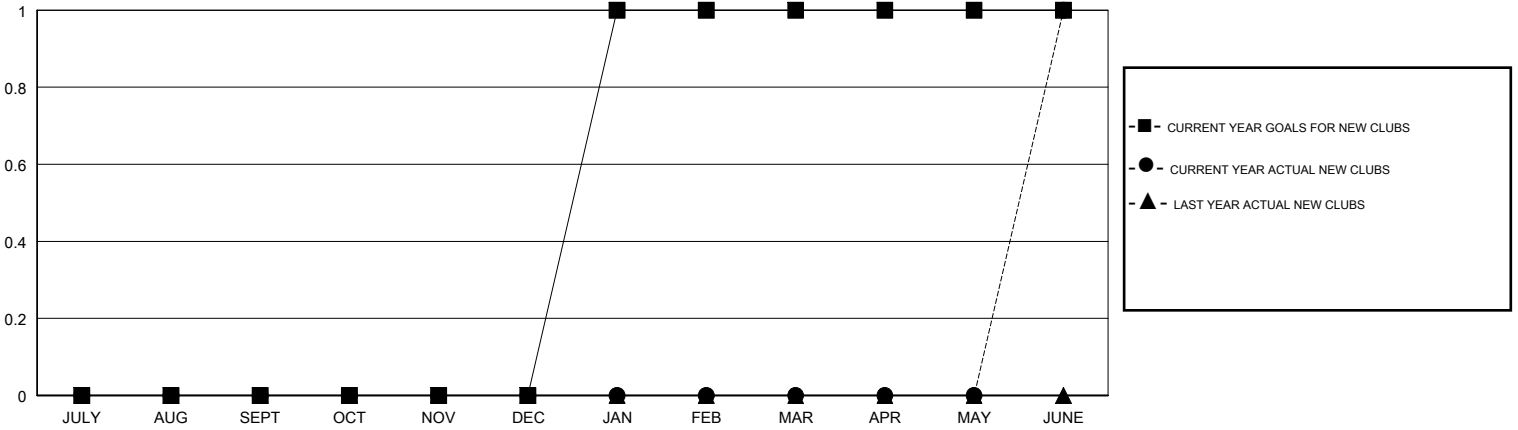
LOCATION MINNESOTA

GMT CA

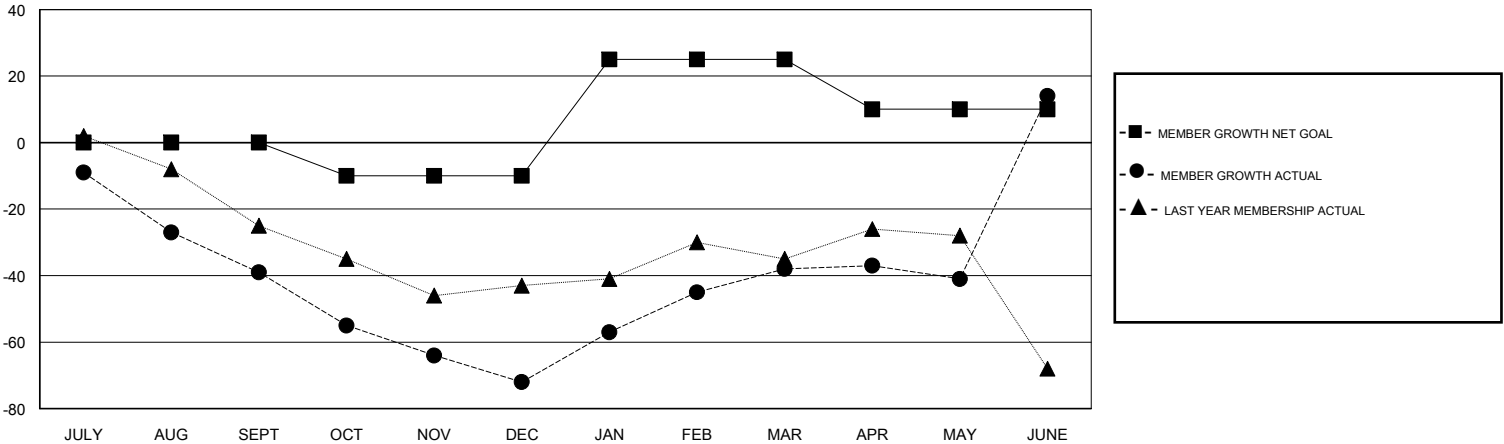
Clubs			
RESULTS FOR 2017-2018			
QUARTER	NEW CLUB GOAL	NEW CLUBS	DROPPED CLUBS
JULY/AUG/SEPT	0	0	0
OCT/NOV/DEC	0	0	1
JAN/FEB/MAR	1	0	0
APR/MAY/JUNE	0	1	0

Members			
RESULTS FOR 2017-2018			
QUARTER	MEMBER GROWTH NET GOAL	MEMBER GROWTH ACTUAL	DROPPED MEMBERS ACTUAL (including transfers)
JULY/AUG/SEPT	0	28	60
OCT/NOV/DEC	-10	53	76
JAN/FEB/MAR	35	93	56
APR/MAY/JUNE	-15	143	84

GOALS AND ACTUAL NEW CLUBS CUMULATIVE



GOALS AND ACTUAL MEMBERS CUMULATIVE



DROPPED CLUBS: 1	66 CLUBS OF 78 ADDED 1 OR MORE NEW MEMBERS	<u>GENDER DISTRIBUTION</u>	
DROPPED MEMBERS		MALE	2,174 (71.73%)
DECEASED	28	FEMALE	857 (28.27%)
CLUB CANCELLED	0	Women Percentage Fiscal Year Goal: 28%	
OTHER	248	TOTAL FAMILY UNIT MEMBERS	0
TOTAL	276	FAMILY MEMBERS PAYING HALF DUES	0

[CLICK HERE FOR CUMULATIVE MEMBERSHIP DATA](#)